

## DASH PANELS

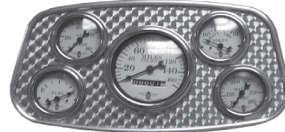
Our award winning panels feature a 1/4" rounded, beveled edge to showcase our 1/2" circle patterned insert. The insert is manufactured from 3/8" thick aluminum and is designed for 3 3/8" & 2 1/16" gauges in a variety of styles.



F-2 Six Hole Dash Panel

Dims: 5 1/8" x 20"

Price: \$224.95/ea. + Free Shipping



1934 Ford Style Dash Panel

Dims: 5 1/2" x 10 3/4"

Price: \$188.00/ea.



Universal Six Hole Dash Panel

Dims: 5 1/2" x 20 1/2"

Price: \$224.95/ea. + Free Shipping



Auburn Dash Panel

Dims: 5 1/4" x 18"

Price: \$188.00/ea.



1932 Ford Style Dash Panel

Dims: 5 1/8" x 15"

Price: \$188.00/ea.



Stewart Warner Dash Panel

Dims: 5 1/4" x 15 1/2"

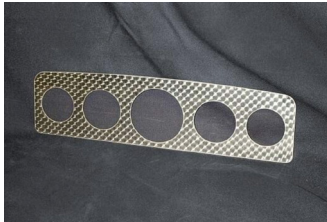
Price: \$188.00/ea.



Proudly Made in USA  
 UPS or USPS Shippable

## STREET ROD DASH INSERTS

Our dashes are manufactured from .063" aluminum & feature our 1/2" circle pattern. Standard panels are designed for 3 3/8" & 2 1/16" gauges in a variety of styles, but other gauge hole sizes are available at an additional cost. Not seeing what you need? Custom fabrication services are available to add class to your classic ride today! Please see our custom pattern fabrication instructions for further details.



A-5 Dash

(Auburn Style)

Dims: 4 5/8" x 17 1/2"

Price: \$99.00/ea.

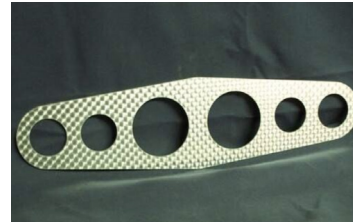


C-5 Dash

(Universal Style)

Dims: 5 1/4" x 15 1/2"

Price: \$89.00/ea.



C-6 Dash

(Universal Style)

Dims: 5 1/4" x 21"

Price: \$99.00/ea.



Stewart Warner Dash

Dims: 4 5/8" x 15 1/8"

Price: \$99.00/ea.



F-2 Dash

(1932 Ford Style)

Dims: 5 1/2" x 14 1/2"

Price: \$99.00/ea.



F-4 Dash

(1934 Ford Style)

Dims: 5 7/8" x 11 7/8"

Price: \$99.00/ea.



L-5 Dash

Dims: 5 1/4" x 15 1/2"

Price: \$89.00/ea.



L-6 Dash

Dims: 5 1/4" x 21"

Price: \$99.00/ea.



Proudly Made in USA  
 UPS or USPS Shippable

## UNDER MOUNT GAUGE PANELS

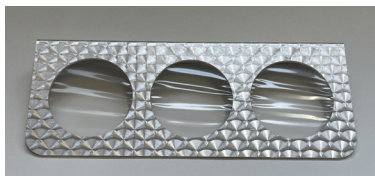
Our engine turned under mounts showcase our 1/2" circle swirl pattern & are manufactured from .063" thick aluminum. The panels are offered in two gauge hole configurations 2 5/8" & 2 1/16", in a variety of configurations depending on how many gauge holes are needed.



Two Hole Under Mount

2 1/16" Holes  
 Dims: 3" x 5 1/2"  
 with 1" lip  
 Price: \$16.98/ea.

2 5/8" Holes  
 Dims: 3 3/4" x 6 7/8"  
 with 1" lip  
 Price: \$29.98/ea.



Three Hole Under Mount

2 1/16" Holes  
 Dims: 3" x 8"  
 with 1" lip  
 Price: \$19.98/ea.

2 5/8" Holes  
 Dims: 3 3/4" x 10"  
 with 1" lip  
 Price: \$39.98/ea.



Four Hole Under Mount

2 1/16" Holes  
 Dims: 3" x 10 1/2"  
 with 1" lip  
 Price: \$24.98/ea.

2 5/8" Holes  
 Dims: 3 3/4" x 13 1/8"  
 with 1" lip  
 Price: \$69.98/ea.



Five Hole Under Mount

2 1/16" Holes  
 Dims: 3" x 13"  
 with 1" lip  
 Price: \$29.98/ea.

2 5/8" Holes  
 Dims: 3 3/4" x 16 1/4"  
 with 1" lip  
 Price: \$79.98/ea.

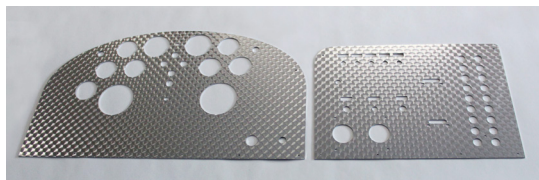


Six Hole Under Mount

2 1/16" Holes  
 Dims: 3" x 15 1/2" with 1" lip  
 Price: \$34.98/ea.

## PETERBILT DASH PANELS

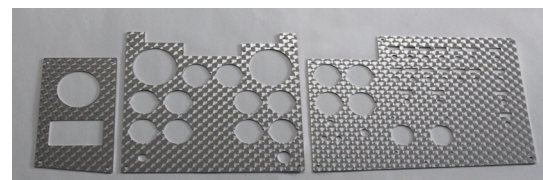
Our Peterbilt dash panels feature our 3/4" circle swirl pattern and are manufactured from .063" thick aluminum. The panels are precut with all holes and switches as shown. Need a custom panel? We got you covered! Please see our custom pattern fabrication instructions for further details.



1978-1987 Peterbilt

359 Dash Panel

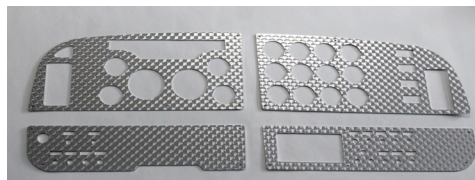
Aproximate Dims: 44" x 14"  
 Price: \$649.00/ea.



2001 & Older Peterbilt

379 Dash Panel

Aproximate Dims: 37 5/8" x 12 1/4"  
 Price: \$749.00/ea.



2001-2005 Peterbilt

379 Dash Panel

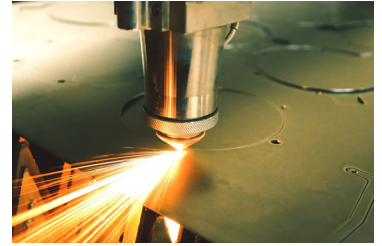
Aproximate Dims: 40" x 13 1/2"  
 Price: \$749.00/ea.





## SERVICES

FPM Metals is your one-stop, concept to completion, metal fabrication shop. Utilizing advanced technology and equipment, FPM can help you save time and money with added accuracy and reliability. Built on family and American values we strive to offer quality, speed and excellence in everything we do.



FPM is a diverse manufacturing company that works with many industries including automotive, agricultural, architectural, marine and aerospace. This equips us to provide a variety of services such as custom metal fabrication, sheet metal polishing, laser cutting, CNC machining, sawing, sheet metal bending, welding, assembly, CAD drawing, & reverse engineering to cover any big or small project. Specializing in custom engine turned dash panels and firewalls to add class to your classic ride.

## CUSTOM PATTERN FABRICATION INSTRUCTIONS

FPM Metals can fabricate our exquisite engine turned metal to fit most applications. In order for us to quote, we require the following information and a pattern of your dash or firewall to duplicate on our laser.

1. An exact pattern of the item is required. Patterns are best when made of white poster board, which is available at print shops or art supply stores. This material is approximately 1/32" thick. If working on a computer, a DXF file can also be used. Please send us the file along with a print and dimensions.
2. Cut poster board to exact shape you want and give dimensions and radius of corners if possible.
3. Label front or face side of pattern.
4. Mark the center and draw the size of holes required for gauges and switches with a compass. Do not cut out.
5. Specify the size of swirl pattern desired: 1/2", 3/4", 1", 1 1/2" or 2".
6. Clarify which material to use: aluminum or stainless steel and the thickness preferred. Typically, .030" is used as an overlay with an existing backing or .063" is self supporting.
7. Provide your name, address and daytime phone, fax or email.

Once we have this information in hand, we will contact you with a quote. We can normally give you an idea of cost from a picture that you can email to us at [sale@fpmmetals.com](mailto:sale@fpmmetals.com).

All dashes are one of a kind and are only as accurate as the pattern that you make. In some cases the original dash can be sent to duplicate please call 402-729-2264 for information and instructions before doing this. We do not drill mounting screw holes, as it is better to position the dash in the car first and then drill these holes for greater accuracy. Material is flat and works best in a flat application. FPM can do some bending, please call concerning application.

If you have any questions please call 402-729-2264 or email [sales@fpmmetals.com](mailto:sales@fpmmetals.com).  
Mail or UPS your pattern to the appropriate address listed below.

Mailing Address:  
FPM Metals  
PO Box 16  
Fairbury, NE 68352

UPS or FedEx Shipping:  
FPM Metals  
224 Sixth Street  
Fairbury, NE 68352



Proudly Made in USA

## ENGINE TURNED SHEET METAL

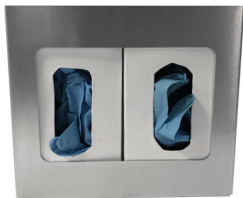
If you do not see the size of panel required for your next project we can cut to your specifications.  
 Reach out to us today for a quote!

Swirl Size	Sheet Size	.063" AL	.030" SS
1/2"	6"x12"	\$64.00	\$70.00
1/2"	6"x16"	\$81.00	\$87.00
1/2"	6"x24"	\$102.00	\$109.00
1/2"	8"x24"	\$120.00	\$133.00
1/2"	12"x24"	\$180.00	\$193.00
3/4"	6"x16"	\$54.00	\$64.00
3/4"	8"x24"	\$80.00	\$88.00
3/4"	12"x24"	\$93.00	\$101.00
3/4"	12"x48"	\$165.00	\$195.00

Swirl Size	Sheet Size	.063" AL	.030" SS
1"	12"x24"	\$67.00	\$82.00
1"	12"x48"	\$109.00	\$139.00
1"	24"x24"	\$109.00	\$139.00
1"	24"x36"	\$185.00	\$210.00
1"	24"x48"	\$205.00	\$269.00
1-1/2"	24"x24"	\$83.00	\$119.00
1-1/2"	24"x36"	\$124.00	\$163.00
1-1/2"	24"x48"	\$145.00	\$198.00
1-1/2"	36"x48"	\$195.00	\$289.00
2"	24"x24"	\$75.00	\$109.00
2"	24"x36"	\$98.00	\$151.00
2"	24"x48"	\$115.00	\$178.00
2"	36"x48"	\$169.00	\$259.00



## INDUSTRIAL STORAGE PRODUCTS



Double Glove Box Station  
 Dims: 11" x 3 3/4" x 10"  
 Price: \$29.95/ea.



Stainless Steel Five Glove Box Station  
 Dims: 26 1/8" x 3 3/4" x 10 1/4"  
 Price: \$50.00/ea.



Beverage Drip Catcher  
 Dims: Base is 8" x 6" with a 6 1/2" drop. Features a 2 7/8" hole to fit most 8 oz. to 16 oz. cups.  
 Price: \$34.95/ea.



Face Mask Dispenser  
Stainless Steel Station  
 Dims: 8" x 3 7/8" x 4 1/4"  
 Price: \$54.99/ea.



Single Glove & Cleaning Wipe Dispenser  
 Dims: 10" x 10" x 8"  
 Price: \$35.00/ea.



Double Glove & Triple Cleaning Wipe Dispenser  
 Dims: 20" x 10" x 8"  
 Price: \$55.00/ea.



**INDUSTRIAL STORAGE PRODUCTS**



Aerosol Two Can Dispenser  
 Dims: 7" x 3 3/8" x 4"  
 Price: \$14.95/ea.



Aerosol Three Can Dispenser  
 Dims: 10 1/4" x 3 3/8" x 4"  
 Price: \$17.50/ea.



Aerosol Four Can Dispenser  
 Dims: 13 1/2" x 3 3/8" x 4"  
 Price: \$19.95/ea.



Single Spray Bottle Holder  
 Dims: 5" x 4 1/4" x 9 1/2"  
 Price: \$24.95/ea.



Double Spray Bottle Holder  
 Dims: 10" x 4 1/4" x 9 1/2"  
 Price: \$29.95/ea.



Triple Spray Bottle Holder  
 Dims: 15" x 4 1/4" x 9 1/2"  
 Price: \$32.95/ea.

Stainless Steel Single Spray Bottle Holder  
 Dims: 5" x 4 3/8" x 9 7/8"  
 Price: \$49.90/ea.

Stainless Steel Double Spray Bottle Holder  
 Dims: 10" x 4 3/8" x 10 3/16"  
 Price: \$59.90/ea.

Stainless Steel Triple Spray Bottle Holder  
 Dims: 15" x 4 3/8" x 10 5/16"  
 Price: \$65.90/ea.



Corner Guards (Stainless Steel)  
 Dims: 2" x 2" x 36"      Dims: 2" x 2" x 48"  
 Price: \$29.95/ea.      Price: \$34.95/ea.



Trash Can Dolly  
 Dims: 18" x 18" x 5 3/8"  
 Price: \$149.00/ea. + Free Shipping



Dual Trash Can Dolly  
 Dims: 42" x 18 3/8" x 5 3/8"  
 Price: \$269.00/ea. + Free Shipping



Chick Dolly  
 Inside Dims: 23 7/8" x 18" x 1 1/8"  
 Outside Dims: 24" x 18 3/8" x 5 3/8"  
 Price: \$159.00/ea. + Free Shipping



Chill Tray Dolly  
 Inside Dims: 23 7/8" x 18" x 1 1/8"  
 Outside Dims: 24" x 18 3/8" x 5 3/8"  
 Price: \$159.00/ea. + Free Shipping